

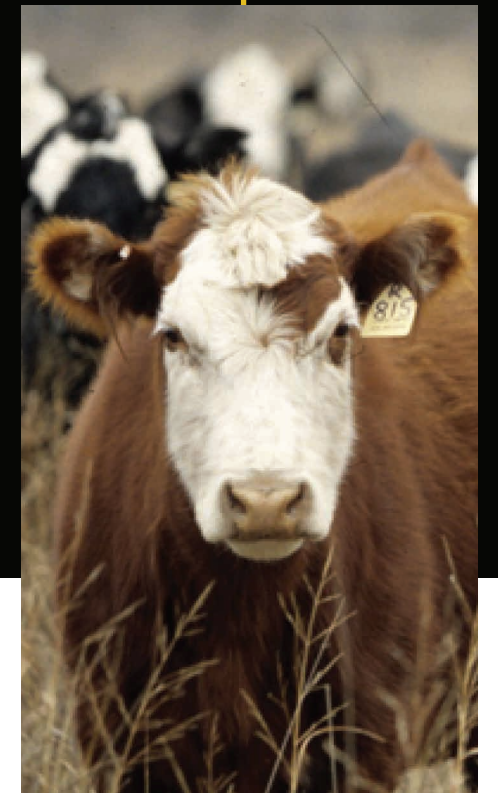
BEEF PRODUCTS & MINERALS



Purina®

Our nutrition expertise is your advantage

With our deep understanding of the nutritional needs of beef cattle at each production stage, Cargill creates innovative feeds and supplements that help optimize the health and growth of your cattle. In addition, Cargill offers technology and expertise to help customers reach maximum profitability.



Purina®



RIGHT NOW® MINERAL

EMERALD | BRONZE | GOLD | ONYX

Targeted nutrition | Regional formulas
Weatherized

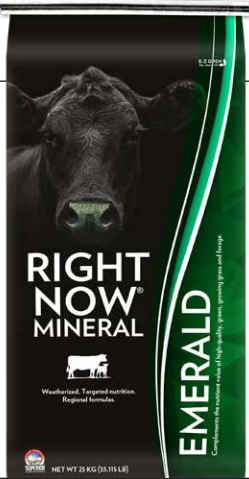
Whether you need to supplement for fast growing early grasses or mature dormant forages, we have the perfect mineral. Right Now Mineral is designed to improve weaning rates, produce heavier calves and reduce feed costs. Each product is formulated with macro and trace mineral levels to complement the ever-changing nutrients supplied by your forage. This ensures that your cows specific nutrient requirements are met during each stage of production.



EMERALD

Seasonality: May - October

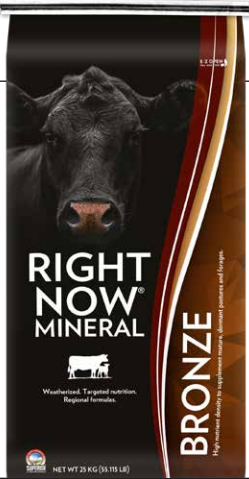
During calving and breeding season, nutrient requirements of the cow are much higher. High quality lush, earlygrowth pasture contains more readily available mineral nutrients and requires a focused mineral supplement. By including only those minerals likely to be deficient in your forage, the Emerald formula delivers a cost-effective solution.



BRONZE

Seasonality: November - March

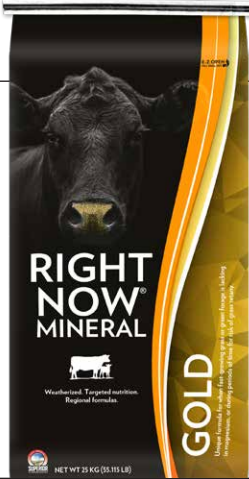
Levels of phosphorus, copper, and most other minerals decrease in forage as it matures. Forage intake parallels this decline. The high nutrient density of the Bronze formula provides the right fortification during late lactation and the dry period. Excellent mineral nutrition before calving helps improve immune status and health of both cows and calves.



GOLD

Seasonality: March - May

Magnesium deficiency and grass tetany can result when lactating cows graze lush pasture, and when pasture cattle are grazing wheat, oat, ryegrass pasture. The Gold formula can be used when high nitrogen forages are being fed. The Gold formula contains magnesium and calcium to help combat grass tetany as well as trace minerals to support healthy reproduction and breeding rates.



ONYX

Seasonality: Year-round

Stressed calves, cows in A.I. programs, embryo transfer programs, developing replacements, first-calf heifers, may have special supplementation needs. The Onyx formula helps meet these needs with organic zinc, manganese, copper, cobalt, and selenium which are more readily absorbed into the bloodstream.



Calcium: 15.50%	Manganese: 5000 mg/kg	Calcium: 12.00%	Manganese: 5000 mg/kg	Calcium: 12.50%	Manganese: 5000 mg/kg	Calcium: 14.50%	Manganese: 5000 mg/kg
Phosphorus: 6%	Zinc: 5000 mg/kg	Phosphorus: 8%	Zinc: 5000 mg/kg	Phosphorus: 2%	Zinc: 5000 mg/kg	Phosphorus: 7%	Zinc: 5000 mg/kg
Sodium: 6.90%	Cobalt: 46 mg/kg	Sodium: 5.80%	Cobalt: 20 mg/kg	Sodium: 6.50%	Cobalt: 46 mg/kg	Sodium: 5.80%	Cobalt: 90 mg/kg
Magnesium: 5.00%	Vitamin A: 500,000 IU/kg	Magnesium: 1.00%	Vitamin A: 500,000 IU/kg	Magnesium: 13.0%	Vitamin A: 500,000 IU/kg	Magnesium: 5%	Vitamin A: 500,000 IU/kg
Iodine: 200 mg/kg	Vitamin D3: 50,000 IU/kg	Iodine: 200 mg/kg	Vitamin D3: 50,000 IU/kg	Iodine: 200 mg/kg	Vitamin D3: 50,000 IU/kg	Iodine: 200 mg/kg	Vitamin D3: 50,000 IU/kg
Iron: 3000 mg/kg	Vitamin E: 2500 IU/kg	Iron: 4900 mg/kg	Vitamin E: 2500 IU/kg	Iron: 2600 mg/kg	Vitamin E: 2500 IU/kg	Iron: 5500 mg/kg	Vitamin E: 2500 IU/kg
Copper: 2500 mg/kg	Selenium: 30 mg/kg	Copper: 2000 mg/kg	Selenium: 30 mg/kg	Copper: 1500 mg/kg	Selenium: 30 mg/kg	Copper: 2000 mg/kg	Selenium: 30 mg/kg

RECEIVING CHOW



GROWER CHOW

ACTIV MINERALS

SUP-R-BLOCKS

SHOW RATION

PRODUCT NAME	FEATURES	BENEFITS	
Receiving Chow Stretcher	<ul style="list-style-type: none">Specifically designed to be fed to stressed cattle for 21 to 28 days along with on-farm grains and free-choice forages	<ul style="list-style-type: none">Formulated to help get low-stress cattle onto feed faster for accelerated weight gain	
3119	Protein 15%	Fat: 1%	Fiber: 20%
Receiving Chow Supplement	<ul style="list-style-type: none">Specifically designed to be fed to newly arrived cattle for 21 to 28 days, along with on-farm grains and free - choice forages	<ul style="list-style-type: none">Formulated to help get cattle onto feed faster for accelerated weight gain	
3123	Protein 16%	Fat: 1%	Fiber: 20%
Balancer Starter	<ul style="list-style-type: none">A receiving program designed to receiving low to moderate risk calvesIt is a blend of Purina Receiving Chow Complete with distillers and premix, meaning that it compliments and mixes well with on-farm grains and forages	<ul style="list-style-type: none">High energy and protein content help compensate for lower initial intakes as calves arrive at the feedlotA balance of fiber, protein, energy, and vitamins, this product gets calves off to a balanced start	
91270	Protein 20%	Fat: 7%	Fiber: 12%

PRODUCT NAME		FEATURES	BENEFITS		
Back-grounder Builder		<ul style="list-style-type: none">• A palatable feed for backgrounding cattle	<ul style="list-style-type: none">• Contains adequate protein and energy to support and maintain moderate weight gain for beef calves on a forage diet		
3328		Protein 13%	Fat: 2%		Fiber: 15%
Lean Plus		<ul style="list-style-type: none">• A complete feed available in two different protein formulations	<ul style="list-style-type: none">• Supply the proper amounts of energy, protein, minerals and vitamins for growing cattle fed adequate quantities of good quality forages		
3315		Lean Plus 13%	Protein 13%	Fat: 2%	Fiber: 15%
3321		Lean Plus 15%	Protein 15%	Fat: 2%	Fiber: 15%
Cattle Complete		<ul style="list-style-type: none">• A complete feed nutritionally balanced in energy, protein, vitamins, and minerals for developing cattle. Designed to be fed with onfarm, high quality forages	<ul style="list-style-type: none">• High energy supplement contains adequate fiber for good rumen health, and get calves gaining well in a moderate growth ration		
3210		Protein 13%	ECP/NPN:0.75%	Fat: 2%	Fiber: 25%
Beef Extender 6.0		<ul style="list-style-type: none">• A palatable feed for backgrounding cattle that is a blend of grains and distillers to be fed with on farm corn silage and forage	<ul style="list-style-type: none">• High energy supplement contains adequate fiber for good rumen health, and get calves gaining well in a backgrounding ration		
3430		Protein 19%	Fat: 2%		Fiber: 25%
Beef Balancer Grower		<ul style="list-style-type: none">• Pelleted blend of nutrients to give the equivalent of distillers and premix with the option of additional urea	<ul style="list-style-type: none">• Formulated to meet the needs of growing beef cattle and to compliment on farm forages		
3412		Beef Balancer Grower 3.5	Protein 22%	Fat: 8%	Fiber: 10%
3411		Beef Balancer Grower 4.5	Protein 25%	Fat: 10%	Fiber: 12%
3410		Beef Balancer Grower 5.5	Protein 32%	Fat: 10%	Fiber: 12%
Golden Steer with Rumensin		<ul style="list-style-type: none">• A traditional beef supplement containing a blend of a number of protein sources with no urea added.• Very flexible supplement that can be used from very young calves as a creep supplement as well as grower or finisher age and weight in cattle	<ul style="list-style-type: none">• Formulated to meet the needs of growing beef cattle and to compliment on farm forages		
3863		Golden Steer 32% with Rumensin	Protein 32%	Fat: 1.5%	Fiber: 13%
Performance Beef		<ul style="list-style-type: none">• Carefully formulated to meet the animal's protein, mineral and vitamin requirements	<ul style="list-style-type: none">• For cattle feeders that want quality feed at an affordable cost per day		
3860		Performance Beef 32%	Protein 32%	Fat: 1.5%	Fiber: 14%
Balancer Bull Grower		<ul style="list-style-type: none">• Carefully formulated to meet the animal's protein, mineral and vitamin requirements	<ul style="list-style-type: none">• A complete fed for developing bulls or heifers on a high hay or haylage type diet with a limit fed pelleted bulk feed		
93450		Balancer Bull Grower	Protein 14%	Fat: 2%	Fiber: 8%

Activ Mineral is a traditional mineral, designed with finer particles. Activ Mineral comes with anti-caking technology to last longer when exposed to the elements. This free choice mineral is designed for year around feeding through all levels of production.

	ACTIV B12:12	ACTIV B14:7	ACTIV B15:5	ACTIV B15:10	ACTIV + C12:12	ACTIV + C14:7	PASTURE PLUS
CODE	3383	3371	3374	3378	3372	3373	1869
Calcium	12%	14%	15%	15%	12%	14%	14%
Phosphorus	12%	7%	5%	10%	12%	7%	6.5%
Sodium	9%	9%	15%	6%	3%	5%	7.8%
Magnesium	2%	2%	2%	2%	5%	5%	1%
Sulfur	1%	1%	1%	1%	1%	1%	0.28%
Potassium	0.5%	0.5%	0.5%	0.5%	0.5%	0.5%	2.3%
Iodine	70 mg/kg	70 mg/kg	34.80 mg/kg	70 mg/kg	101 mg/kg	101 mg/kg	80 mg/kg
Iron	4750 mg/kg	4750 mg/kg	2750 mg/kg	4750 mg/kg	5500 mg/kg	5500 mg/kg	5760 mg/kg
Copper	1165 mg/kg	1165 mg/kg	580 mg/kg	1165 mg/kg	1700 mg/kg	1700 mg/kg	980 mg/kg
Manganese	3500 mg/kg	3500 mg/kg	1740 mg/kg	3500 mg/kg	5100 mg/kg	5100 mg/kg	3200 mg/kg
Zinc	3500 mg/kg	3500 mg/kg	1740 mg/kg	3500 mg/kg	5100 mg/kg	5100 mg/kg	4000 mg/kg
Cobalt	12 mg/kg	12 mg/kg	5.80 mg/kg	12.0 mg/kg	17 mg/kg	17 mg/kg	20 mg/kg
Fluorine	500 mg/kg	500 mg/kg	500 mg/kg	500 mg/kg	500 mg/kg	500 mg/kg	500 mg/kg
Vitamin A	300,000 IU/kg	300,000 IU/kg	300,000 IU/kg	300,000 IU/kg	350,000 IU/kg	350,000 IU/kg	320,000 IU/kg
Vitamin D3	90,000 IU/kg	90,000 IU/kg	90,000 IU/kg	90,000 IU/kg	105,000 IU/kg	105,000 IU/kg	48,000 IU/kg
Vitamin E	1,200 IU/kg	1,200 IU/kg	0 IU/kg	1,200 IU/kg	3,000 IU/kg	3,000 IU/kg	800 IU/kg
Selenium	20 mg/kg	20 mg/kg	15 mg/kg	15 mg/kg	30 mg/kg	30 mg/kg	20 mg/kg

Beef Sup-R-Block		Sup-R-Block with Bovatec		Mineral Sup-R-Block	
<ul style="list-style-type: none">A brood cow supplement in a weather-resistant block form designed to be fed on a free-choice basisUsed in conjunction with good quality forages, Sup-R-Block will balance nutritional deficiencies in changing pasture condition or stored forages		<ul style="list-style-type: none">A protein supplement in a weatherproof, self-limiting block form medicated with BovatecThis product is designed to supplement heifers and growing cattle on pasture.Sup–R–Growth Block is Canada's only free-choice medicated protein supplement		<ul style="list-style-type: none">Formulated to specifically provide the correct level of minerals and vitamins to optimize animal performance of cattle on pasture or in confinement systems free-choice medicated protein supplement	
Protein: 24%	Maganese: 600 mg/kg	Protein: 22%	Iron: 500 mg/kg	Calcium: 9%	Manganese: 3,960 mg/kg
ECP/NPN: 16%	Zinc: 600 mg/kg	ECP/NPN: 14.5%	Copper: 80 mg/kg	Phosphorus: 5%	Zinc: 3,960 mg/kg
Fat: 5%	Cobalt: 2.0 mg/kg	Fat: 5%	Maganese: 105 mg/kg	Phosphorus: 3%	Cobalt: 13.2 mg/kg
Fibre: 3%	Fluorine: 50 mg/kg	Fibre: 3%	Zinc: 115 mg/kg	Sodium: 5%	Fluorine: 50 mg/kg
Sodium: 1.1%	Vitamin A: 38,500 IU/kg	Sodium: 1%	Cobalt: 1.4 mg/kg	Sulfur: 1%	Vitamin A: 340,000 IU/kg
Calcium: 2%	Vitamin D3: 11,550 IU/kg	Calcium: 2.5%	Fluorine: 50 mg/kg	Potassium: 1.5%	Vitamin D3: 102,000 IU/kg
Phosphorus: 1%	Vitamin E: 330 IU/kg	Phosphorus: 1.2%	Vitamin A: 36,000 IU/kg	Iodine: 75 mg/kg	Vitamin E: 1,700 IU/kg
Magnesium: 3%	Selenium: 2.1 mg/kg	Magnesium: 3%	Vitamin D3: 7,000 IU/kg	Iron: 3,500 mg/kg	Selenium: 30 mg/kg
Sulfur: 0.6%		Sulfur: 0.3%	Vitamin E: 40 IU/kg	Iodine: 1 mg/kg	
Iron: 650 mg/kg		Potassium: 1.5%	Selenium: 1.0 mg/kg	Iron: 3,500 mg/kg	
Copper: 200 mg/kg		Iodine: 1 mg/kg		Copper: 1,320 mg/kg	

PRODUCT NAME	FEATURES	BENEFITS	
Show Ration	<ul style="list-style-type: none">Created to meet requirements of replacement heifers, bulls and brood cows.Balanced protein and energy levels	<ul style="list-style-type: none">Highly fortified with minerals and vitaminsSame feed for your entire show string, consistent and even growth	
3026	Protein: 14%	Fat: 2%	Fiber: 12%

PRODUCT NAME	FEATURES	BENEFITS			
Hi-Pro	<ul style="list-style-type: none">Carefully formulated to meet the animal's protein, mineral and vitamin requirementsQuality feed at an affordable cost per day	<ul style="list-style-type: none">For growing cattle fed rations containing large amounts of corn silage and minimal amounts of grainContains higher levels of ECP/NPN which is an excellent protein source when cattle are fed rations containing significantly high energy levels (> 0.59 Mcal/lb)			
3901	Hi-Pro 32%	Protein 32%	ECP/NPN:16%	Fat: 1.5%	Fiber: 13%
3921	Hi-Pro 40%	Protein 40%	ECP/NPN:26%	Fat: 1.5%	Fiber: 13%
Pro-Bova 50	<ul style="list-style-type: none">A performance beef supplement formulated to meet the protein, mineral and vitamin requirements of growing cattle fed high-quality, high-energy corn silage	<ul style="list-style-type: none">This supplement will maximize lean muscle gain, frame development, and optimize feed efficiency of cattle fed corn silage based rations			
3830	Pro-Bova 50	Protein 50%	ECP/NPN:15%	Fat: 2.5%	Fiber: 8%

PRODUCT NAME	FEATURES	BENEFITS			
Beef Balancer Finisher Complete	<ul style="list-style-type: none">A pelleted blend of nutriments to give the equivalent of distillers grain and premix with the option of additional urea	<ul style="list-style-type: none">Being pelleted provides easy mixing and convenience when used in a finisher or grower dietsFormulated to meet the needs of growing beef cattle and to compliment on farm forages			
3270	Beef Balancer Finisher Complete	Protein 15%	ECP/NPN:0.9%	Fat: 2%	Fiber: 14%
3272	Beef Balancer Hi - Finisher Complete	Protein 19%	ECP/NPN:2.15%	Fat: 2%	Fiber: 10%
3402	Beef Balancer Finisher 4.0	Protein 28%	ECP/NPN:1.5%	Fat: 8%	Fiber: 7%
3407	Beef Balancer Hi - Finisher 4.0	Protein 30%	ECP/NPN:2.125%	Fat: 10%	Fiber: 7%
3400	Beef Balancer Finisher 6.0	Protein 27%	ECP/NPN:1%	Fat: 10%	Fiber: 7%
3405	Beef Balancer Hi - Finisher 6.0	Protein 29%	ECP/NPN:1.7%	Fat: 10%	Fiber: 7%
Hi-Pro	<ul style="list-style-type: none">Carefully formulated to meet the animal's protein, mineral and vitamin requirementsQuality feed at an affordable cost per day	<ul style="list-style-type: none">For growing cattle fed rations containing large amounts of corn silage and minimal amounts of grainContains higher levels of ECP/NPN which is an excellent protein source when cattle are fed rations containing significantly high energy levels (> 0.59 Mcal/lb)			
3920	Hi-Pro 40%	Protein 40%	ECP/NPN:26%	Fat: 1.5%	Fiber: 13%
Maxi-Pro 56%	<ul style="list-style-type: none">Supplement that contains a unique blend of rumen available proteins (SIP and DIP) and high quality undegradable proteins (UIP) that optimizes carcass quality in feedlot cattle	<ul style="list-style-type: none">Specifically formulated to be fed in a grower-finisher feedlot supplement strategy with on farm forages and grains			
3846	Maxi-Pro 56%	Protein 56%	ECP/NPN:30%	Fat: 1.5%	Fiber: 10%
3846	Maxi-Pro 56% with Rumensin	Protein 56%	ECP/NPN:30%	Fat: 1.5%	Fiber: 10%
BIF Feedlot	<ul style="list-style-type: none">Designed for finishing cattle with whole shelled corn feeding	<ul style="list-style-type: none">These products have been designed to be fed with minimal or no other sources of roughage (depending on management system)			
3705	BIF Feedlot 1.8 LU Beef Supplements	Protein 25%	ECP/NPN:10.5%	Fat: 2%	Fiber: 20%
3704	BIF Feedlot 1.3 LU Beef Supplements	Protein 31%	ECP/NPN:13.5%	Fat: 2%	Fiber: 15%
3703	BIF Feedlot 1.1 LU Beef Supplements	Protein 36%	ECP/NPN:16.2%	Fat: 2%	Fiber: 20%

PRODUCT NAME	FEATURES	BENEFITS		
Veal Supplement	<ul style="list-style-type: none">A pelleted coplete protein/vitamin/mineral supplement to be mixed with a whole shelled corn for veal calves	<ul style="list-style-type: none">Consistent and even growthAll natural		
3650	Protein 36%	Fat: 1.5%	ECP/NPN: 0%	Fiber: 13%
Maxi-Pro RV with LAS	<ul style="list-style-type: none">This product is designed for growing and finishing calves on a high grain (all corn) ration	<ul style="list-style-type: none">High quality rumen undergradable protein supplement with lasalocid sodium		
3813	Protein 37%	Fat: 4%	ECP/NPN: 0%	Fiber: 10%
Maxi-Pro RV 37% MU Rumensin	<ul style="list-style-type: none">Design for growing and finishing red veal calves on a high grain, whole corn diet	<ul style="list-style-type: none">High quality, rumen undegradable protein supplement		
3844	Protein 37%	Fat: 5%	ECP/NPN: 4.02%	Fiber: 10%

NUTRITION & MANAGEMENT

CREEP FEED


MINERAL PREMIX

PRODUCT NAME	FEATURES	BENEFITS		
AAA Creep	<ul style="list-style-type: none">A complete and palatable feed, enriched with essential minerals and vitamins for optimal calf growth	<ul style="list-style-type: none">Protein and energy balance optimizes the development of skeletal and superior lean muscle gain to ensure good weight gain for calves on pastureHelps to maximize weaning weight while allowing the cow to maintain better body condition to improve reproductive performance		
3010	AAA Creep	Protein 16%	Fat: 3.5%	Fiber: 15%
3018	AA Creep Feed	Protein 16%	Fat: 3.5%	Fiber: 15%
3012	Cattle Creep Chow	Protein 16%	Fat: 2%	Fiber: 8%
Pasture Performance Creep	<ul style="list-style-type: none">A highly palatable to ensure consistent consumption of efficient weight gainCalves can be expected to gain 2.0 – 2.5 lbs/hd/day with a feed efficiency of 5.5 – 6.0 lbs of feed / lb of gain	<ul style="list-style-type: none">This creep feed will help calves reach their fullest genetic potential by giving calves the bloom in pounds of profitable performancePasture performance creep truly is designed for feed efficiency		
3022	Protein 16%	Fat: 2%	Fiber: 16%	

PRODUCT NAME	FEATURES	BENEFITS			
Beef Mineral Premix 19:3 1871	<ul style="list-style-type: none">A granular premix that has been designed to be an economical option for growing and finishing cattle	<ul style="list-style-type: none">Regularly stocked in bags with sodium monensin for coccidiosis and for improved feed efficiencyThis premix does not contain any added protein, so all protein is supplied through by-products and on farm feeds			
Calcium: 19%	Sodium: 4.5%	Sulfur: 1%	Iron: 6,500 mg/kg	Copper: 1,200 mg/kg	Manganese: 3,600 mg/kg
Phosphorus: 3%	Magnesium: 5%	Iodine: 72 mg/kg	Fluorine: 500 mg/kg	Cobalt: 15 mg/kg	Zinc: 3,600 mg/kg
		Vitamin A: 350,000 IU/kg			
		Vitamin D3: 13,208 IU/kg			
		Vitamin E: 1,850 IU/kg			
Feedyard NU Premix 3892	<ul style="list-style-type: none">A granular premix that has been designed to be an economical option for growing and finishing cattle	<ul style="list-style-type: none">Consistent, reliable performance in any grower or finisherThis premix does not contain urea, so all dietary protein must be supplied through by-products and on-farm feeds			
Calcium: 31.55%	Sodium: 5.15%	Sulfur: 0.45%	Iron: 1,623 mg/kg	Copper: 705 mg/kg	Manganese: 2,115 mg/kg
Phosphorus: 0.10%	Magnesium: 0.31%	Iodine: 42.3 mg/kg	Fluorine: 50 mg/kg	Cobalt: 7.1 mg/kg	Zinc: 2,115 mg/kg
		Vitamin A: 132,082 IU/kg			
		Vitamin D3: 11,008 IU/kg			
		Vitamin E: 331 IU/kg			
Feedyard Finisher 38 Premix 3891	<ul style="list-style-type: none">A granular premix that has been carefully formulated and highly fortified to meet the nutritional requirements of a grower or finisher diet	<ul style="list-style-type: none">Consistent, reliable performance on any grower or finisherIt can be easily mixed, flows well out of bins and is designed to be fed with a by-products-based diet and on farm feeds			
Calcium: 31.55%	Sodium: 5.15%	Sulfur: 0.45%	Iron: 1,623 mg/kg	Copper: 705 mg/kg	Manganese: 2,115 mg/kg
Phosphorus: 0.10%	Magnesium: 0.31%	Iodine: 42.3 mg/kg	Fluorine: 50 mg/kg	Cobalt: 7.1 mg/kg	Zinc: 1786 mg/kg
		Vitamin A: 132,082 IU/kg			
		Vitamin D3: 11,008 IU/kg			
		Vitamin E: 331 IU/kg			
Commodity Blend	<ul style="list-style-type: none">A granular premix that has been carefully formulated and highly fortified to meet the nutritional requirements of a grower or finisher diet	<ul style="list-style-type: none">Consistent, reliable performance on any grower or finisherIt can be easily mixed, flows well out of bins and is designed to be fed with a by-products based diet and on farm feeds			
3882	Commodity Blend 42%	Protein 42%	Fat: 0.5%	Fiber: 3%	
Calcium: 19%	Sodium: 4.0%	Phosphorus: 0.15%	Vitamin A: 250,000 IU/kg/kg	Vitamin D3: 25,000 IU/kg	Vitamin E: 865 IU/kg

What are the features, benefits, and results from feeding with ROC™ technology?

ROC™ is a technology that allows us to pellet the equivalent of a granular premix. The pelleting allows for quicker and more accurate TMR mixing than a granular premix. ROC™ contains the necessary calcium in a half pound feeding rate for all feeder cattle. Bulk delivery option available.

PRODUCT NAME	FEATURES	BENEFITS		
	<ul style="list-style-type: none">A new technology that allows the pelleting of many ingredients without the use of binders or fillers	<ul style="list-style-type: none">Increase the inclusion ratePermits the use of only the ingredients you need for your cattle (mineral, urea, limestone, and specific medications		
3395/3396	ROC Premix	Protein 37.5%	Fat: 1.5%	Fiber: 3%

* This product is only available out of Addison

FINISHER CHOW



VEAL CHOW